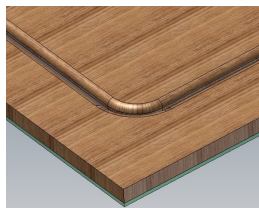
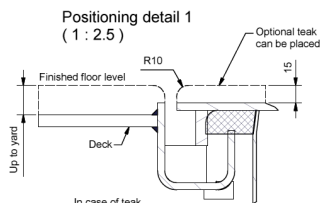
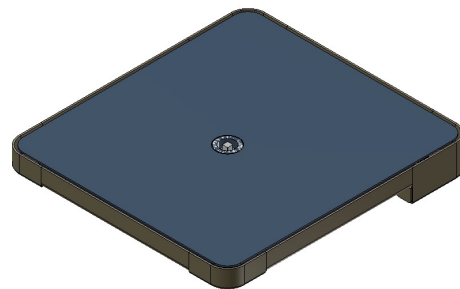


Flush yacht hatch

The flush yacht hatch is a watertight hatch which is compliant to yacht standards without compromising the functionality of the hatch. It is supplied as a completely finished and tested hatch, ready to weld in.

On top of the hatch you can place max. 20mm teak.



Class society approval

According demarcation overview class society

Specification

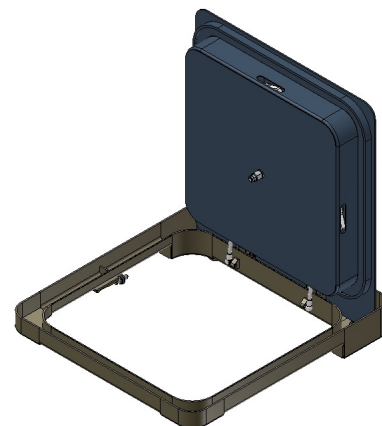
Coaming

- 8 mm aluminium
- 8 mm stainless steel AISI316L
- 8 mm steel

Hatch cover

- 8 mm steel
- 8 mm stainless steel AISI316L
- 8 mm aluminium plate.

The cover lid is equipped with a covering to hide the closing mechanism and gas springs. The covering is made of the same material as the cover lid.



Closing system

The hatch is operated through the patented, well-known Winel Musketeer central closing mechanism with stainless steel closing points. Self braking cleats operate with single action on the handle/handwheel. Light operation due to 1:33 force transmission. Cleats are fully adjustable. Quantity of closing points: 3.

Operation

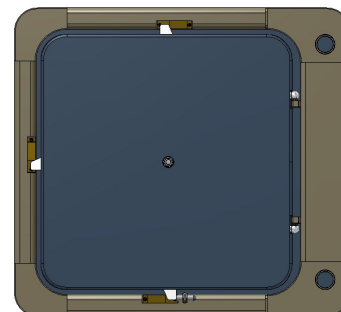
The hatch is standard delivered without an operation device. Please check the option list for the various possibilities.

Insulation

The hatch is standard delivered without insulation, please check the option list for the various possibilities.

Bearing material

Orkot® Marine Bearings are manufactured from a unique synthetic composition incorporating solid lubricants for dry running to ensure outstanding wear life. Virtually no swelling in sea water and very low thermal coefficient of expansion provide dimensional stability in arctic and tropical seas. They do not corrode or promote corrosion of the housing and tolerate both edge loading and misalignment.



Flush yacht hatch (watertight)

(article code 482.)

Hinges

The hatch is equipped with two hinges which are placed in a recessed part of the coaming.

Scuppers

A scupper with a diameter of 60,3mm is placed on both corners at the hinge side.

Gasspring

Two stainless steel gas springs are placed inside the hatch. One gas spring is connected to the hatch cover with a fixed point and the other gas spring is equipped with a bracket with an elongated hole. Advantage of this system is a balanced opening force. In closed and open position the gas spring is hidden and protected by the covering.

Available sizes

Clear length (Hinge Side): 600, 650, 700,750, 800 and 850 mm
Clear width (non hinge side): 600, 650, 700,750, 800 and 850 mm

Surface treatment

Shot blasted SA2, 5 and primed with one layer of AWL hull guard primer, min. 20 Mu.
Standard stainless steel parts are passivated and pickled.

Available options

See option list yacht hatches. Document: PS.YH.38. Option list yacht hatches.

Packing

Packed on a wooden pallet and sealed with shrinking foil.

Available article codes:

Please specify article codes, when asking for quotation, as follows:

482.11.HSxW	Flush yacht hatch, aluminium coaming, steel cover, HSxW
482.12.HSxW	Flush yacht hatch, aluminium coaming, aluminium cover, HSxW
482.13.HSxW	Flush yacht hatch, aluminium coaming, stainless steel cover, HSxW
482.21.HSxW	Flush yacht hatch, stainless steel coaming, steel cover, HSxW
482.22.HSxW	Flush yacht hatch, stainless steel coaming, aluminium cover, HSxW
482.23.HSxW	Flush yacht hatch, stainless steel coaming, stainless steel cover, HSxW
482.31.HSxW	Flush yacht hatch, steel coaming, steel cover, HSxW
482.32.HSxW	Flush yacht hatch, steel coaming, aluminium cover, HSxW
482.33.HSxW	Flush yacht hatch, steel coaming, stainless steel cover, HSxW

Specify clear opening	: HS x W = Hinge side x width
Specify water pressure	: max. 6 Mwc
Specify options	: Article code
Specify class society	:
Quantity	: